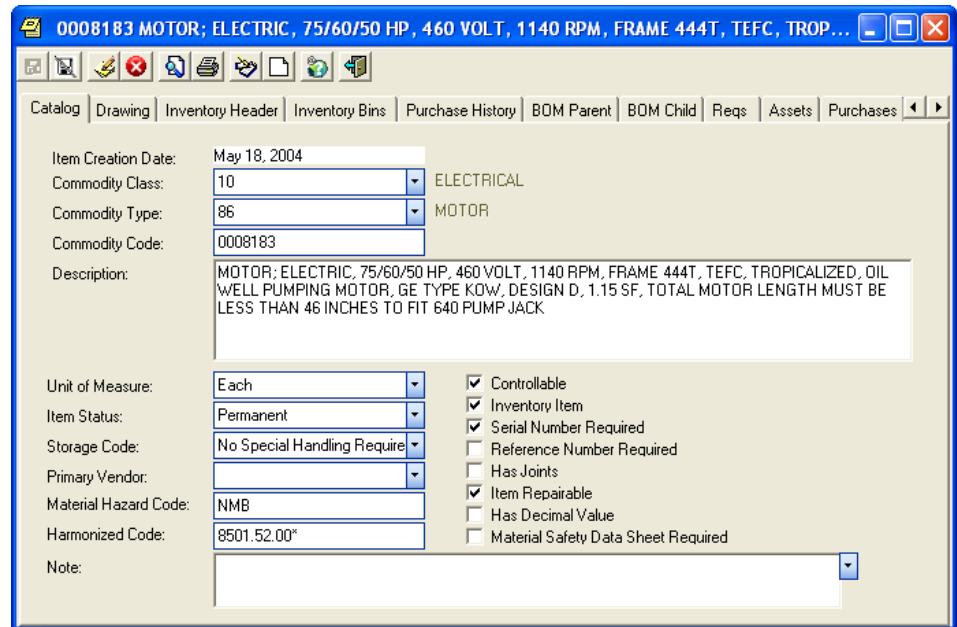


## CENDEC™ Materials Management Features

- **Corporate Catalogue**

- The corporate catalogue not only determines the way in which CENDEC™ handles the item but also allows for consistency in item descriptions, numbering and classification.
- The catalogue eliminates costly duplication, unnecessary purchases and over-stock situations.
- Catalogue items may be easily added to any warehouse, requisition, purchase order or fixed asset location.
- Classification of items allows for easy reporting on a class of items down to an individual item.



**0008183 MOTOR; ELECTRIC, 75/60/50 HP, 460 VOLT, 1140 RPM, FRAME 444T, TEFC, TROP...**

Catalog | Drawing | Inventory Header | Inventory Bins | Purchase History | BOM Parent | BOM Child | Reqs | Assets | Purchases

Item Creation Date: May 18, 2004  
 Commodity Class: 10 ELECTRICAL  
 Commodity Type: 86 MOTOR  
 Commodity Code: 0008183  
 Description: MOTOR; ELECTRIC, 75/60/50 HP, 460 VOLT, 1140 RPM, FRAME 444T, TEFC, TROPICALIZED, OIL WELL PUMPING MOTOR, GE TYPE KOW, DESIGN D, 1.15 SF, TOTAL MOTOR LENGTH MUST BE LESS THAN 46 INCHES TO FIT 640 PUMP JACK

Unit of Measure: Each  
 Item Status: Permanent  
 Storage Code: No Special Handling Require  
 Primary Vendor:  
 Material Hazard Code: NMB  
 Harmonized Code: 8501.52.00\*  
 Note:

☒ Controllable  
☒ Inventory Item  
☒ Serial Number Required  
☐ Reference Number Required  
☐ Has Joints  
☒ Item Repairable  
☐ Has Decimal Value  
☐ Material Safety Data Sheet Required

## • Inventory Data Management and Transactions

- CENDEC™ is a multi-site, multi-warehouse, application allowing you to save time and costs in the management of your dispersed inventory locations.
- The inventory module supports serial number tracking, bills of materials, ABC inventory levels, min, max and re-order point levels, material reservations, consignments items, the ability to track items in decimal quantities, and dual currency costing supported by FIFO, LIFO or weighted average cost.
- Also supported in inventory is a single screen view detailing the usage/historical information of each item. Such information includes all past movements and purchases as well as all on-order details.

**Commodity Catalog 0008183 MOTOR; ELECTRIC, 75/60/50 HP, 460 VOLT, 1140 RPM, FRAME ...**

Drag a column header here to group by that column.

Stock #	Whse	Bin	Cond	OH Qty	Jnts	Avg Cst	Resvd	Repair	Alt Avg \$	Count Dt	Count	Quot
0008183	1	600	A	9	0	6963.5...	0	0	8141.38...	11/8/2005	1	0
0008183	1	ALM. UNIVE...	A	1	0	6557.1...	0	0	8204.11...	11/4/2005	1	0

**Inventory Detail 0008183 1 600 A**

Detail Update | Catalog Entry | Receipts | On PO not RCVD

Commodity Code: 0008183 MOTOR; ELECTRIC, 75/60/50 HP, 460 VOLT, 1140 RPM, FRAME 444T, TEFC, TROPICALIZED, OIL WELL PUMPING MOTOR, GE TYPE KOW, DESIGN D. 1.15 SF, TOTAL MOTOR LENGTH MUST BE LESS THAN 46 INCHES TO FIT 640 PUMP JACK

Warehouse Code: 1 Varadero Pipe Yard

Bin: 600 Condition: A

Current Owner:

Company: 265 AFE #: Facility: Account: 14300 Inventory Feature:

IN IERNATIONAL IC

On Hand Quantity: 9  
On Hand Joints: 0  
Reserved Quantity: 0  
On Repair: 0  
Quota: 0

Average Cost: 8  
Average Cost in AI: 8

Property Control:   
Inspection Code:   
Insurance Item:   
Physical Count: 1  
Date of Physical C: 11 / 8 / 2005

Notes:

Label10

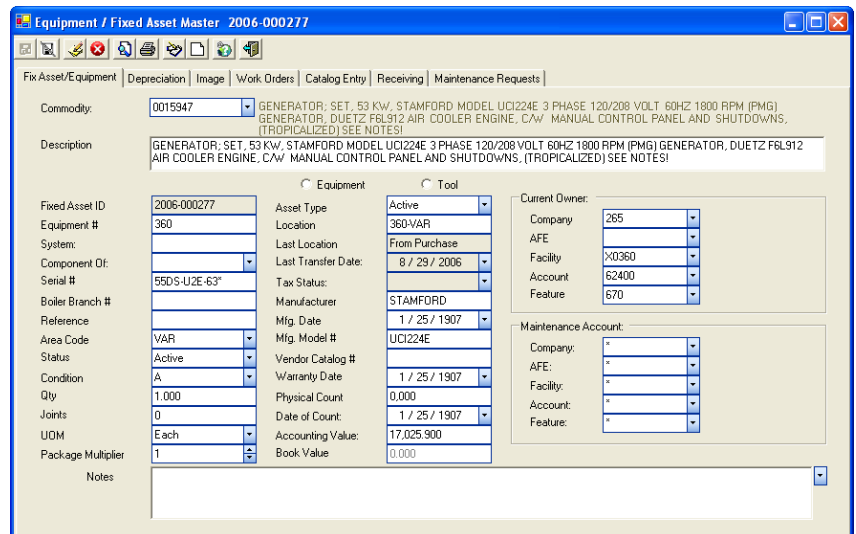
Drag a column header here to group by that column.

Stock #	Warehouse Code	Bin	Condition Code	Serial Number	IS_ASTID	Reference Num...
0008183	1	600	A	WVG32080C		
0008183	1	600	A	WVG26290C		
0008183	1	600	A	OXG01209A		
0008183	1	600	A	WVG26290D		
0008183	1	600	A	WVG32080R		

Record: 3 Of 9

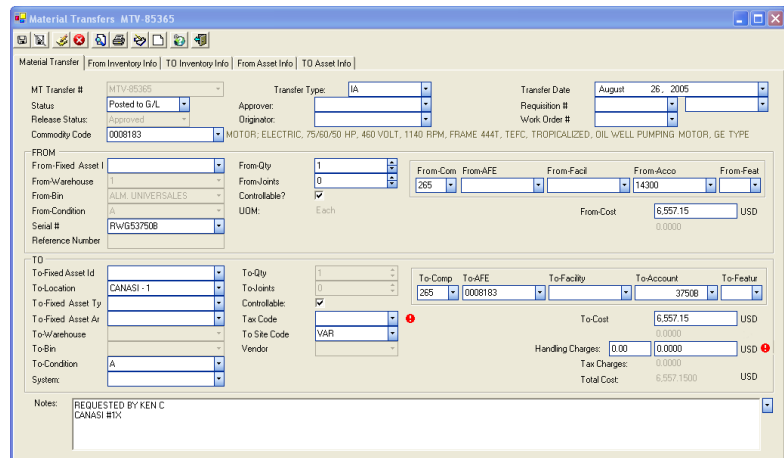
## • Fixed Asset Data Management

- The fixed asset module allows you to track a wide range of information for all of your assets, whether they are corporate or operational assets.
- Managing your significant investment of fixed assets in CENDEC™ will ensure unnecessary costs, tax losses or missed revenue opportunities are things of the past.
- Also supported in the fixed asset module is the ability to depreciate assets, or groups of assets, using a number of different depreciation methods.
- The fixed asset module, in combination with the rental schedule module, is also used to track all of your rental items including a complete rental schedule, and all of the costs associated with the rental term.



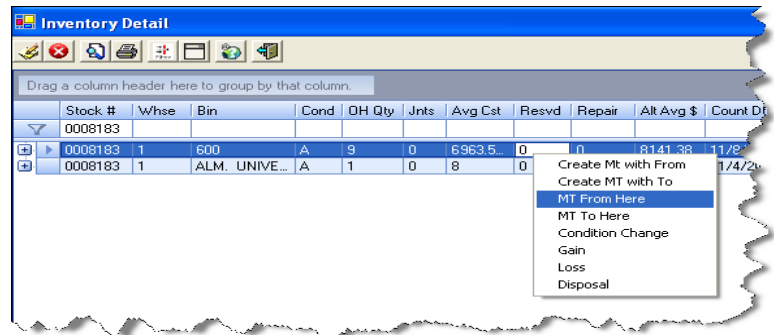
## • Material Movements/Transfers

- CENDEC™ features an extensive material movement/transfer module to facilitate a number of different methods of managing your inventory and fixed assets.
- Inventory to Project movements, Project to Inventory returns, Warehouse





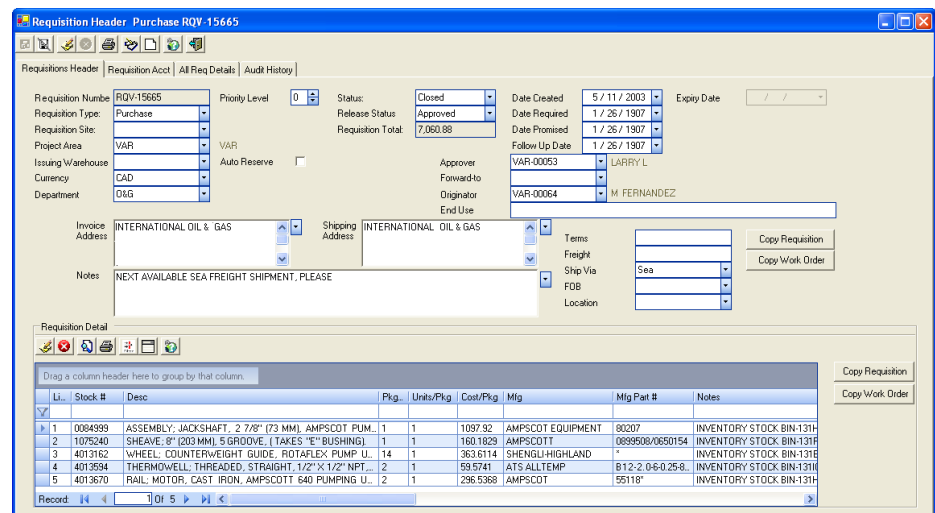
to Warehouse transfers, Project to Project moves, Material Upgrades/Downgrades, Quantity/Value Gains and Losses, and Non Controllable Item issues are all easily handled through one screen using information that is already stored in the system.



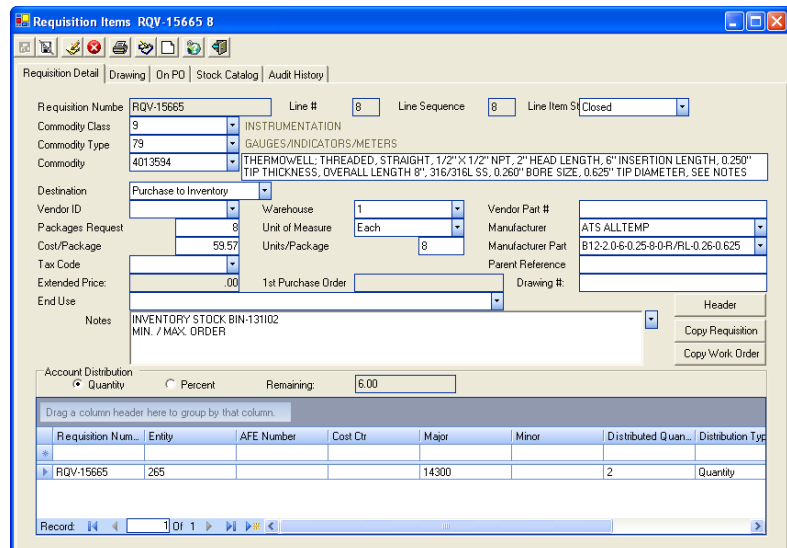
- You can further minimize your effort because CENDEC™ automatically performs material transfers based on inventory requisitions.
- CENDEC™ can also assist you with managing the extra costs associated with inventory and fixed asset movements such as freight, handling charges and taxes.

## • Requisitions, Quotations, Purchase Orders, Receipts and Invoices

- With the volumes of materials and inventory items that must be ordered, distributed, delivered, received and paid for, companies are looking for ways to streamline the process and reduce the time and paperwork involved. CENDEC™ provides you with requisitions, quotations, purchase orders, receiving events, and invoices to help with streamlining your procurement process.



- Your procurement process can consist of all the mentioned steps/areas of the process or you can choose to use a single step/area of the process. If the entire process is utilized, all information can be easily copied from the first step to the last step.
- All types of requisitions and purchase orders support a full electronic approval process, complete with e-mail notifications and authorization limits for each type of order. These features help avoid unnecessary approval delays and administration costs.
- CENDEC™'s quotation module makes it fast and simple for you to secure the best price and take advantage of special incentives and discounts offered by your vendors. The ease of this module is realized through options such as electronic submission of RFQs, and returns of bids via a number of different formats, as well as bid management tools.
- The type of orders supported in CENDEC™ to help you manage all aspects of your procurement function include Purchase Orders and Agreements, Blanket Orders, Blanket Releases/Call-offs, Contracts, Service Orders and Agreements, Rental, Consignment and Repair Orders.
- All orders can be received either to inventory or direct to project/asset, therefore reducing your forwarding time.
- CENDEC™ also facilitates expediting, commitment tracking, freight manifesting, a complete purchasing history of each item, and automatic generation of standing/re-order requisitions for items that fall below the re-order level as a result of a material transfer.



Requisition Num...	Entity	AFE Number	Cost Ctr	Major	Minor	Distributed Quan...	Distribution Typ
RQV-15665	265			14300		2	Quantity